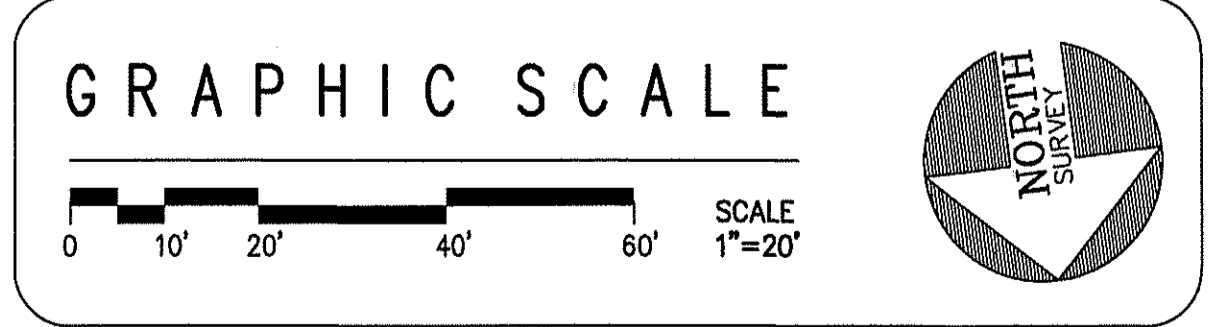
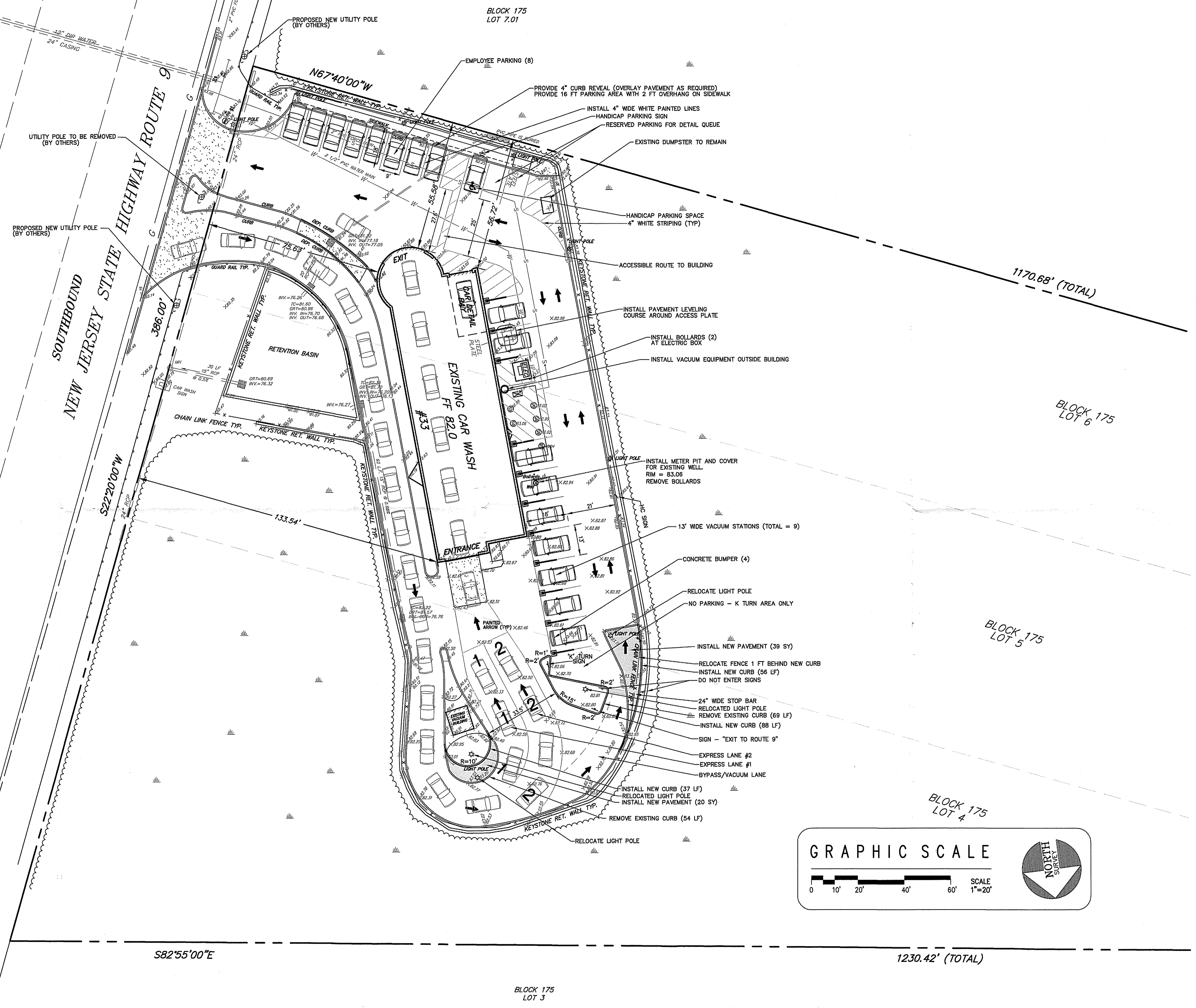


COPYRIGHT © 2019, J.K.R. ENGINEERING - ALL RIGHTS RESERVED. THE DESIGN ORIGINALLY PREPARED BY J.K.R. ENGINEERING IS HEREBY REPRODUCED BY THE ENGINEER WITHOUT THE WRITTEN PERMISSION OF J.K.R. ENGINEERING IS PROHIBITED.

NEW JERSEY STATE HIGHWAY ROUTE 9
NORTHBOUND
(140' ROW)

SOUTHBOUND
NEW JERSEY STATE HIGHWAY ROUTE 9
(140' ROW)



S82°55'00"E

1230.42' (TOTAL)

BLOCK 175
LOT 7.01

BLOCK 175
LOT 6

BLOCK 175
LOT 5

BLOCK 175
LOT 4

BLOCK 175
LOT 3

BUBBLEWORKS AUTO SPA
SITE PLAN
VACUUM STATIONS

AMENDED PRELIMINARY & FINAL SITE PLAN
BLOCK 175, LOTS 3, 4, 5, 6, 7, 8, 9, 10, & 15
TOWNSHIP OF MARLBOROUGH, MONMOUTH COUNTY, NEW JERSEY
BLOCK 2100, LOTS 9, 10, & 15
TOWNSHIP OF OLD BRIDGE, MIDDLESEX COUNTY, NEW JERSEY

DATE: 10-18-19
SCALE: FIELD BOOK FILE NO. 19-01-19
DRAWN BY: [Signature]
CHECK BY: [Signature]

J.K.R. Engineering
and Planning Services, LLC
49 NOMOCO ROAD
FREEHOLD, NEW JERSEY 07728
Tel: (732) 760-4108
Fax: (732) 461-9400
email: jkr@jkr-engineering.com

RICHARD DIFOLCO
PROFESSIONAL ENGINEER
No. 12-12-10
Certificate of Authorization # 24628120100

REVISIONS

CAD Drawing 814
Sheet 3 of 5